

WOMEN

MIRIDER™



CONTENTS

PRE-RIDE CHECKS & MAINTENANCE	PAGE 2
INTRODUCTION	PAGE 3
MIRIDER 20 INSTRUCTIONS	PAGE 4 - 7
MIRIDER 20 GB3 INSTRUCTIONS	PAGE 8 - 11
REVIEW MIRIDER	PAGE 12
SOCIAL NETWORK	PAGE 13
MIRIDER ACCESSORIES	PAGE 14
WARRANTY	PAGE 15
CONTACT MIRIDER	PAGE 16



***IMPORTANT PRE-RIDE
CHECKS & MAINTENANCE***

Scan or visit mirider.co.uk/maintenance



WELCOME TO THE FOLD



Welcome to the fold. Now is the exciting part - unwrapping your MiRiDER, you will be itching to start having fun and exploring the great outdoors. We want you to be happy with your new purchase. We are a family run business with a passion to give the highest quality in a fun, dynamic & sustainable way. Every detail in designing your e-bike has been carefully engineered to deliver the most exciting ride.

The MiRiDER is a multi award-winning folding e-bike, thoroughly tested to ensure you receive the best performance. The magnesium frame is light and has a sophisticated suspension giving the ideal weight distribution to always give the smoothest ride. With up to 45 miles per charge you can start planning some amazing adventures. Effortlessly folding within seconds, you have the freedom to go wherever your heart takes you.

Made in the UK, each MiRiDER is hand assembled to the highest quality standard. You will find the name of the MiRiDER technician that has personally built your e-bike on the crossbar.

We take immense pride in ensuring that each component has been meticulously inspected and arrives to you ready to enjoy. Once activated, we got you covered with our trusted 2 year 'no quibble' warranty.

We have committed to exploring innovative ways to assist our customers in embracing sustainability and being kinder to our planet. Your MiRiDER has been lovingly packaged with our plastic free packaging. This reflects one of our core values in making life easier and more sustainable.

Welcome to the MiRiDER Community. This is a great place to discover more adventures, share your experiences and be part of our ever-growing community of thousands of members. Our 'excellent rated' aftercare is here to look after you too. All you need to decide now is - Where will your MiRiDER take you?

IF YOU PURCHASED A MIRIDER 20

Thank you for purchasing your MIRIDER 20 folding eBike. Below is a quick guide to get you going, and a few helpful hints and tips. Your bike has been carefully assembled by our build technicians and once the handlebars have been fitted, the bike opened out and switched on, you will be ready to ride. You will notice a small amount of distance showing on the computer screen odometer, which represents the pre-delivery inspection tests we carry out.

The battery will come pre-charged and is already inserted into the frame for your convenience. Two keys are provided for the battery frame lock, and they are secured to the wire near to the brake lever (please do not lose these). Be careful when removing all the packaging, so as not to damage the paintwork. Please retain the packaging for a short while until you have tested that the bike is functioning correctly. Here you will find a guide to all the features and functions, and we advise that you familiarise yourself with your new bike before riding.

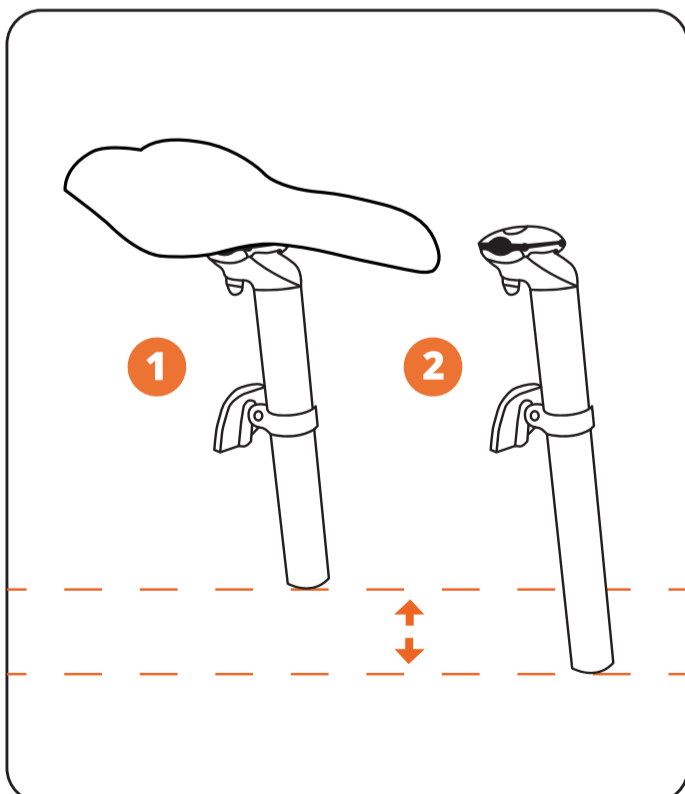
BIKE STRUCTURE & FUNCTIONS



1. Telescopic stem
2. Thumb boost (right hand side)
3. LED computer screen
4. MiRiDER grips
5. Canbus waterproof connectors
6. Stem folding mechanism
7. LED headlight

8. Magnesium fork
9. Mechanical disc brakes
10. Magnesium frame
11. Frame folding mechanism
12. Easy fold pedals
13. Chainset protection wheel
14. KMC chain

15. All terrain tyres
16. 250W motor hub
17. Mudguards
18. Shock absorber
19. Seat post clamp
20. Fixed seat post
21. Standard saddle



MIRIDER 20 SEAT POSTS

Your MiRiDER 20 will arrive with the saddle attached to the standard seat post.

You will also receive a large seat post to suit taller riders.

The standard seat post is suitable for riders from 5ft to 5ft 7

The large seat post is suitable for riders from 5ft 8 to 6ft 3

1 Standard seat post
has a **MINIMUM** saddle height from the floor to the top of the saddle of 830mm

2 Large seat post
has a **MINIMUM** saddle height from the floor to the top of the saddle of 880mm

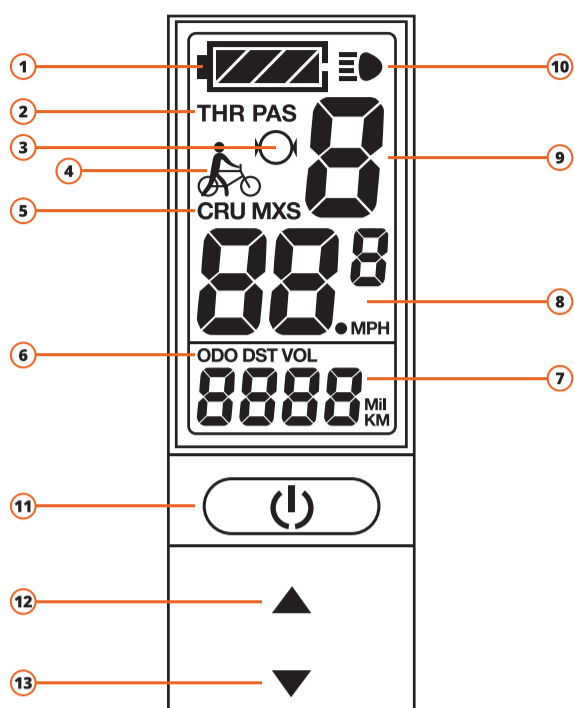
Which seat post required will be determined by a combination of factors including user height, inside leg measurement and personal preference.

Watch the video to learn more:

**SEAT POST
VIDEO**



LCD DISPLAY INSTRUCTIONS



The display content is shown as follows:

1	Battery capacity indicator	10	Backlighting and lights
2	Boost turned on mark (THR)	BUTTONS	
	Power-assist startup mark (PAS)	11	UP button
3	Brake display sign	12	MODE/ON/OFF button
4	Push power assist sign	13	DOWN button
5	Walk assist (CRU)	For further functions, please refer to your owners manual	
	Maximum speed (MXS)	Switch the front light on	
6	Total trip distance (ODO)	Once the bike is powered up, press and hold the 'up' button for three seconds. Repeat to turn off.	
	Single trip distance (DST)	Reset the trip computer	
7	Trip distance or real-time battery voltage display	Once the bike has been powered up for more than 5 seconds, press and hold the 'up' and 'down' buttons together until the screen flashes, then press the central power button once.	
8	Riding speed display		
9	Power assistance level		

With an eBike, it's good to know how far you can go without running out of battery. There are many variables which can increase, or reduce, your expected range, but until you get a handle on this for yourself, here are some tips before your first ride.

We know over 45 miles is possible with one charge, based on our testing on a flat ride, on power level 1/2, and with an 85kg rider:

- 1) Make sure the battery is fully charged (when the light is green on the charger).
- 2) Make sure the tyre pressures are sufficient. Our technicians supply the bike to you with the tyres inflated to the maximum psi as stated on the side wall of the tyre. This keeps the tyre drag, or friction on the road, to a minimum therefore increasing battery range.
- 3) Reduce the power level when on flat roads where minimal rider effort and assistance is required.
- 4) Coast where possible to increase range.
- 5) The battery charge capacity will improve after the first two full charges.
- 6) When walking with the bike, either turn the bike off OR reduce power level to 0 to avoid accidental activation of the assist should the pedals rotate.
- 7) Even when the battery indicator on the controller shows one bar remaining, there could still be plenty of range left. The battery will be low when there are no bars remaining.

Generally speaking, riding with correctly inflated tyres on a lower power level will extend the battery's range. As will a lighter rider on a flatter route.

Note: Cold weather can reduce battery range.

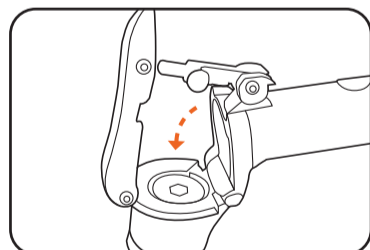
TIPS

BIKE ASSEMBLY INSTRUCTIONS

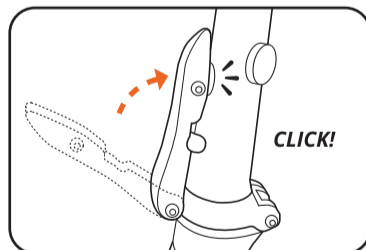
Once you have removed the bike and all of the delivery packaging, you are ready to unfold the bike. Follow the steps below, or scan the QR code to watch our unboxing video.



Securing the stem

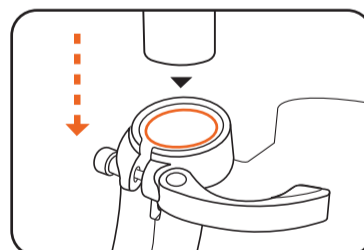


Lift the handlebar stem upwards, until it sits flat on the headset in the upright position.

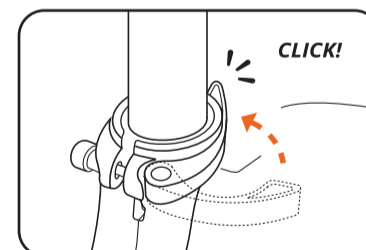


Secure the hinge by pressing the black lever into the stem firmly, until you hear it snap shut.

How to insert the seat



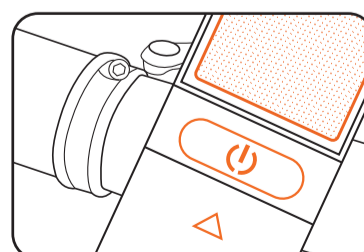
Open the seat clamp, as shown in the image above.



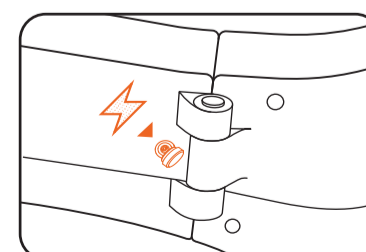
Push the seat into the frame to the minimum insertion mark on the seat post, then secure the seat post by closing the seat post clamp.

Once you have adjusted the handlebar stem and seat height to your liking, you can turn the power on, as seen in the image below. To adjust the power level, simply use the UP and DOWN arrows. Cycling through the different menu screens can be done by pressing the ON/OFF button quickly.

Power on



Press & hold the power button, on the LCD screen for 3 seconds to turn the power on.



Connect the charger into the port if the LCD screen does not activate.

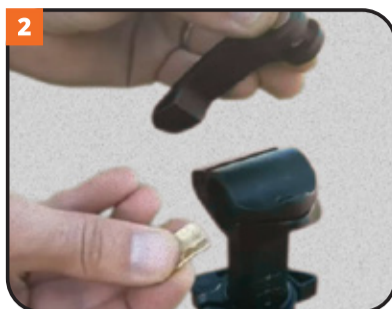
All videos: mirider.co.uk/videos

HANDLEBAR FITTING INSTRUCTIONS

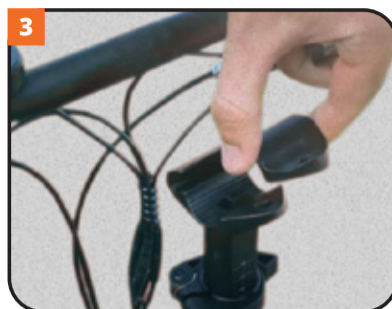
To fit the handlebars, please follow these 8 simple steps:



1 Loosen the bolt and remove



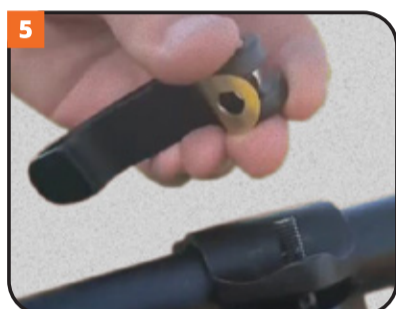
2 Remove clamp handle and tab



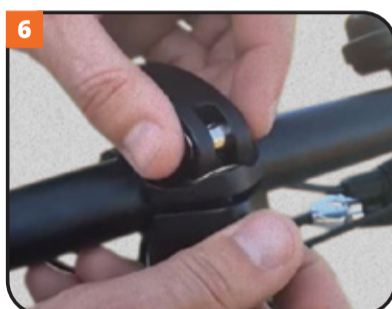
3 Remove the handlebar clamp



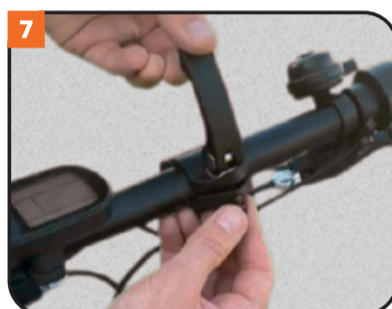
4 Place the handlebars exactly in the centre of the post



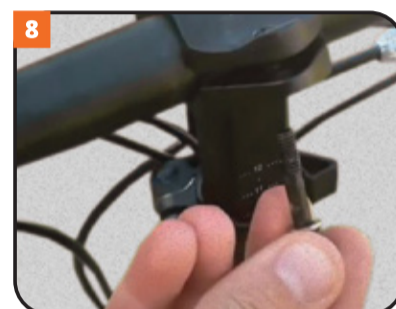
5 Replace the clamp handle making sure the brass washer is orientated correctly



6 Tighten the bolt into the clamp making sure to leave some slack for later adjustment



7 Check the clamp lever will fold down fully



8 Tighten the bolt by small amounts until the clamp lever is firm - do not over tighten



IF YOU PURCHASED A MIRIDER 20 GB3

Thank you for purchasing your MIRIDER 20 GB3 folding ebike. Please read this guide carefully before using the bike for the first time as it contains important safety, performance and service information. Keep it safe during the lifespan of your bicycle. Your bike has been carefully assembled by our build technicians and once the handlebars have been fitted, the bike opened out and switched on, you will be ready to ride. You will notice a small amount of distance showing on the computer screen odometer, which represents the pre-delivery inspection tests we carry out.

The battery will come pre-charged and is already inserted into the frame for your convenience. Two keys are provided for the battery frame lock, and they are secured to the wire near to the brake lever (please do not lose these). Be careful when removing all the packaging, so as not to damage the paintwork. Please retain the packaging for a short while until you have tested that the bike is functioning correctly. Here you will find a guide to all the features and functions, and we advise that you familiarise yourself with your new bike before riding.

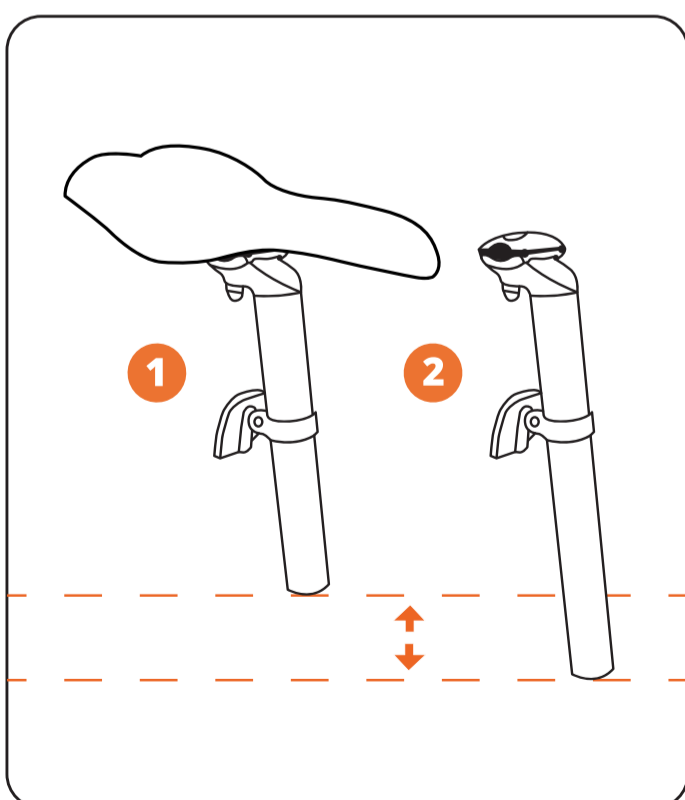
BIKE STRUCTURE & FUNCTIONS



1. Telescopic stem
2. Thumb boost (right hand side)
3. 3 Speed gear shifter
4. LCD colour display
5. Canbus waterproof connectors
6. Stem folding mechanism
7. LED headlight

8. Magnesium fork
9. Hydraulic disc brakes
10. Magnesium frame
11. Frame folding mechanism
12. Easy fold pedals
13. GTRO 3 Speed gearbox
14. Drive belt

15. All terrain tyres
16. 250W motor hub
17. Mudguards
18. Shock absorber
19. Seat post clamp
20. Fixed seat post
21. Selle Royal gel saddle



MIRIDER 20 SEAT POSTS

Your MiRIDER 20 will arrive with the saddle attached to the standard seat post.

You will also receive a large seat post to suit taller riders.

The standard seat post is suitable for riders from 5ft to 5ft 7

The large seat post is suitable for riders from 5ft 8 to 6ft 3

1 Standard seat post
has a **MINIMUM** saddle height from the floor to the top of the saddle of 830mm

2 Large seat post
has a **MINIMUM** saddle height from the floor to the top of the saddle of 880mm

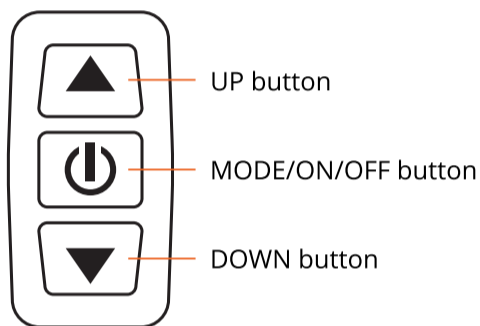
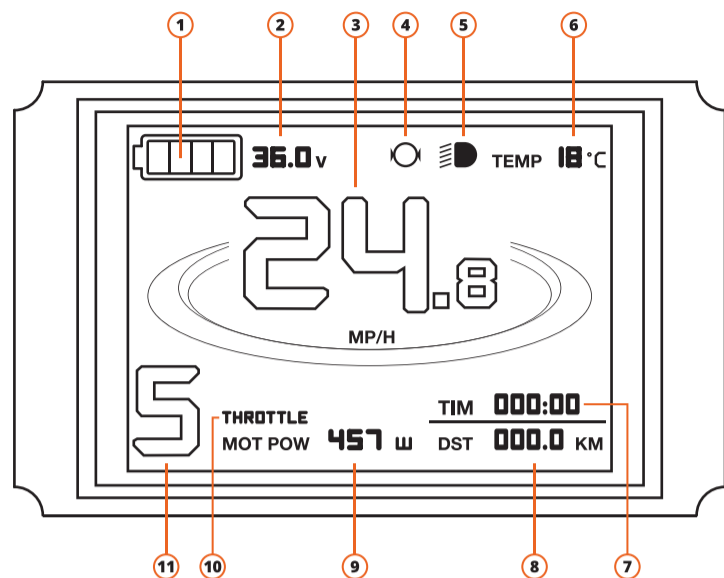
Which seat post required will be determined by a combination of factors including user height, inside leg measurement and personal preference.

Watch the video to learn more:

**SEAT POST
VIDEO**



LCD DISPLAY INSTRUCTIONS



The display content is shown as follows:

1	Battery capacity indicator	7	Single trip time
2	Battery voltage		Total trip time
3	Riding speed display	8	Single trip time
4	Brake display sign		Total trip time
5	Headlight Indicator	9	Power display
	Display backlight	10	Boost engaged
6	Ambient temperature	11	Power assistance level

For further functions, please refer to your owners manual

Switch the front light on

Once the bike is powered up, press and hold the 'up' button for three seconds. Repeat to turn off.

Reset the trip computer

Once the bike has been powered up for more than 5 seconds, press and hold the 'up' and 'down' buttons together until the screen flashes, then press the central power button once.

GEAR CHANGE TIPS

- 1) Shifting between the 3 gears is instant and can be done at standstill or when moving.
- 2) When changing down gears you will need to release pedal pressure to ensure a smooth change.
- 3) Ensure when using the twist grip this is turned precisely to the gear number required.
- 4) Follow the maintenance schedule shown in the full online manual.
- 5) Belt tension is pre-set at the factory, if replacing the wheel ensure correct tension is set as described in the full online manual.

TIPS

With an ebike it's good to know how far you can go without running out of battery. There are many variables which can increase, or reduce, your expected range, but until you get a handle on this for yourself, here are some tips before your first ride. We know over 30 miles is possible with one charge, based on our testing on a flat ride, on power level 1/2, and with an 85kg rider:

- 1) Make sure the battery is fully charged (when the light is green on the charger).
- 2) Make sure the tyre pressures are sufficient. Our technicians supply the bike to you with the tyres inflated to the maximum psi as stated on the side wall of the tyre. This keeps the tyre drag, or friction on the road, to a minimum therefore increasing battery range.
- 3) Reduce the power level when on flat roads where minimal rider effort and assistance is required.
- 4) Coast where possible to increase range.
- 5) The battery charge capacity will improve after the first two full charges.
- 6) When walking with the bike, either turn the bike off OR reduce power level to 0 to avoid accidental activation of the assist should the pedals rotate.
- 7) Even when the battery indicator on the controller shows one bar remaining, there could still be plenty of range left. The battery will be low when there are no bars remaining.

Within the first few charges the battery indicator symbol may show only 1 bar, even after a full charge. This means the battery monitor system needs resetting. To do this, simply ride the bike with assistance for 5 -10 seconds

Generally speaking, riding with correctly inflated tyres on a lower power level will extend the battery's range. As will a lighter rider on a flatter route.

Note: cold weather can reduce battery range.

BIKE ASSEMBLY INSTRUCTIONS

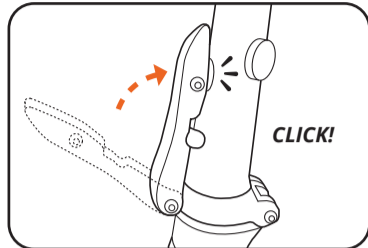
Once you have removed the bike and all of the delivery packaging, you are ready to unfold the bike. Follow the steps below, or scan the QR code to watch our unboxing video.



Securing the stem

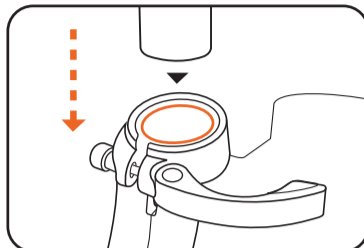


Lift the handlebar stem upwards, until it sits flat on the headset in the upright position.

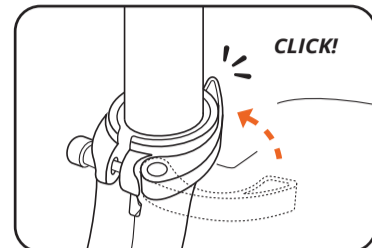


Secure the hinge by pressing the black lever into the stem firmly, until you hear it snap shut.

How to insert the seat



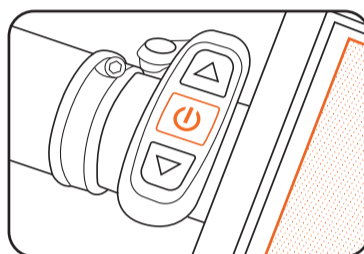
Open the seat clamp, as shown in the image above.



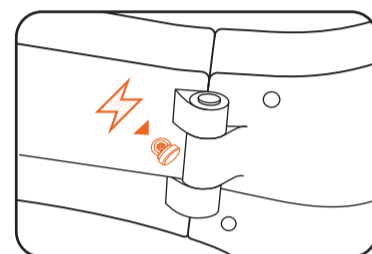
Push the seat into the frame to the minimum insertion mark on the seat post, then secure the seat post by closing the seat post clamp.

Once you have adjusted the handlebar stem and seat height to your liking, you can turn the power on, as seen in the image below. To adjust the power level, simply use the UP and DOWN arrows. Cycling through the different menu screens can be done by pressing the ON/OFF button quickly.

Power on



Press & hold the power button, on the LCD screen for 3 seconds to turn the power on.

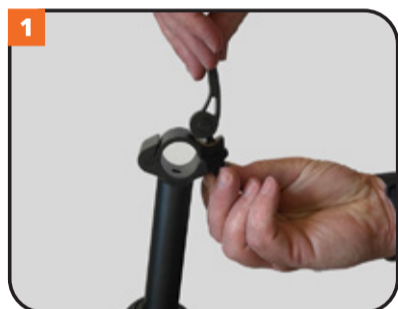


Connect the charger into the port if the LCD screen does not activate.

All videos: mirider.co.uk/videos

HANDLEBAR FITTING INSTRUCTIONS

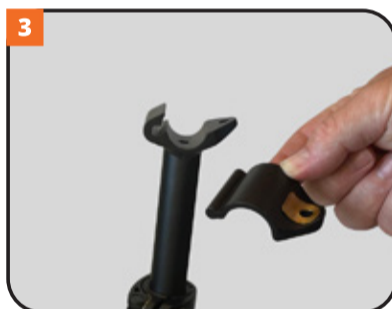
To fit the handlebars & LCD display screen, please follow these 12 simple steps.



Loosen the bolt and remove



Remove clamp handle and tab



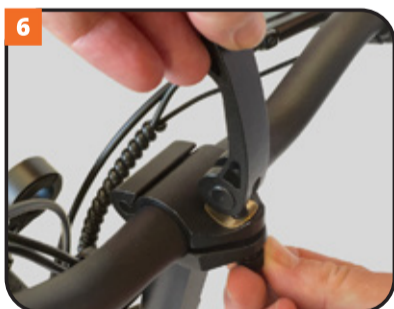
Remove the handlebar clamp



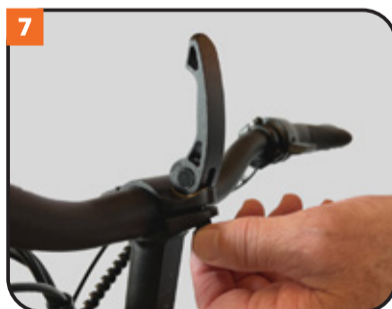
Place the handlebars exactly in the centre of the post



Reinsert the handlebar clamp



Reinsert the clamp handle & bolt making sure the brass washer is orientated correctly



Tighten the bolt by small amounts until the clamp level is firm – do not overtighten



Remove screen mounting clamp screws



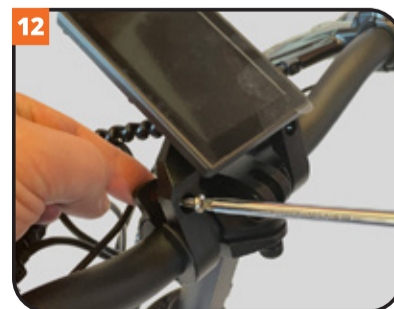
Remove mounting clamp spacers



Gently open the mounting clamps and place over the handlebars



Insert the four mounting blocks between the clamp and the handlebars



Refit the clamp mounting screws – do not overtighten

Love your bike?



PLEASE LEAVE US A REVIEW



★ Trustpilot

Thank you for shopping with us!

All our products are crafted with great attention to detail. If you love your order, please scan the QR code and leave us a review.

For any assistance, please feel free to contact us at hello@mirider.co.uk



Scan  or go to [trustpilot.com](https://www.trustpilot.com) and search for **MiRIDER**



DON'T FORGET TO FOLLOW US ON SOCIAL MEDIA



Join us through a host of social media channels and keep right up to date with news from MiRiDER, our retailers and fellow MiRiDER owners.

Join the fold, and join the conversation.



SEARCH 'MiRiDER UK'



MIRIDER ACCESSORIES



MIRIDER WATERPROOF
PHONE HOLDER



MIRIDER
LUGGAGE RACK



MIRIDER ONE
CHARGER



MIRIDER
PANNIER BAG



MIRIDER
HANDLEBAR BAG



MIRIDER STORAGE
BAG WITH WHEELS



MIRIDER
BATTERY PACK



MIRIDER
12V CHARGER



MIRIDER
GEL SADDLE

**TO CHECK OUT THE FULL RANGE
SEE WEBSITE MIRIDER.CO.UK OR ASK IN STORE**

MEET THE TEAM



MATT HIGGINSON
SALES DIRECTOR



MARTIN HIGGINSON
MARKETING DIRECTOR



MARK HIGGINSON
PURCHASING DIRECTOR



STEPHEN ALTY
COMMERCIAL DIRECTOR



MARTIN CARRIER
DIRECTOR



ALLEN BOARDMAN
CUSTOMER SERVICE MANAGER



ADAM WHITE
OPERATIONS MANAGER



ADRIAN MIDGLEY
PRODUCT DEVELOPMENT MANAGER



2 YEAR WARRANTY

Once registered, your new MIRIDER One will benefit from a comprehensive 2 year Warranty*. We pride ourselves on the build and component quality of each and every bike and the warranty is our guarantee to you.

Within thirty (30) days of arrival, please register your bike to activate your warranty:
mirider.co.uk/warranty

*Full warranty terms and conditions can be found within the MIRIDER instruction manual, which is online at mirider.co.uk/user-manuals

MADE IN BRITAIN[®]



FULL MANUAL

Our full manual can be downloaded from our website using this link:
mirider.co.uk/user-manuals
or scan this QR code with a smart phone.



COMMUNITY

Our MiRiDER Community Group is a great place to stay in touch and share your riding experiences. You can join like-minded MiRiDER fans, ask questions, share images & videos, and find out the latest news from MiRiDER in a fun online environment.

 @miridercommunity

CONTACT US

If you require any assistance with your bike, during set up or after your first few rides, please don't hesitate to contact your retailer.

Phone: 01257 228242 **Email:** hello@mirider.co.uk
MiRiDER, Unit 3, Croftwood Square,
Wigan, WN5 0LG

MiRiDER[™]

mirider.co.uk